

# QFA18K2

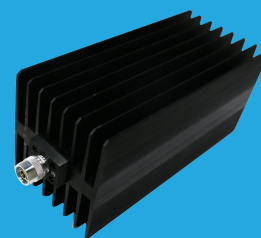
## DC~18GHz, 200W

**Features:**

- \* Low VSWR
- \* High Attenuation Flatness

**Applications:**

- \* Wireless
- \* Transmitter
- \* Laboratory Test
- \* Radar


**Electrical**

Frequency:	DC~18GHz
Attenuation:	10~60dB
Impedance:	50Ω
Average Power*1:	200W@25°C max.

[1] Derated linearly to 10W@120°C.

**Mechanical**

Size*2:	203*120*110mm 7.992*4.724*4.331in
RF Connectors:	N Male, N Female

[2] Exclude connectors.

**Environmental**

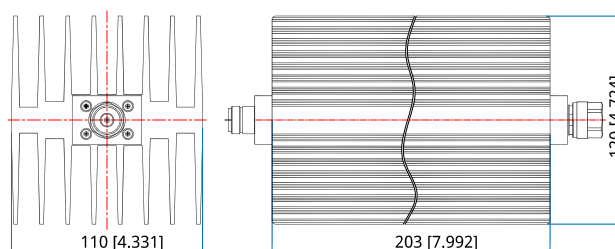
Temperature:	-55~+125°C
--------------	------------

**Attenuation Accuracy and VSWR**

Frequency (GHz)	Attenuation Accuracy (±dB) vs. Attenuation (dB)						VSWR (max.)
	10	20	30	40	50	60	
DC~4	0.7	0.7	0.8	0.9	0.9	0.9	1.20
4~8	0.8	0.8	0.9	0.9	0.9	0.9	1.25
8~12.4	0.9	0.9	1.0	1.1	1.1	1.1	1.35
12.4~18	2.0	-	1.5	1.3	1.4	1.4	1.45

**How To Order**
**QFA18K2-X-Y-Z**

- X: Frequency in GHz  
 Y: Attenuation in dB  
 Z: Connector type

**Outline Drawings**


Unit: mm [in]  
 Tolerance: ±2mm [±0.08in]

Connector naming rules:  
 N - N

**Examples:**

To order an attenuator, DC-18GHz, N male to N female, 30dB attenuation, specify QFA18K2-18-30-N.