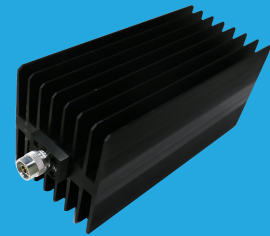


# QFA18K25

## DC~18GHz, 250W

Features:  
 \* Low VSWR  
 \* High Attenuation Flatness

Applications:  
 \* Wireless  
 \* Transmitter  
 \* Laboratory Test  
 \* Radar



### Electrical

Frequency: DC~18GHz  
 Attenuation: 10~60dB  
 Impedance: 50Ω  
 Average Power\*1: 250W@25°C max.

[1] Derated linearly to 12.5W@120°C.

### Mechanical

Size\*2: 254\*120\*110mm  
 10\*4.72\*4.33in  
 RF Connectors: N Male, N Female

[2] Exclude connectors.

### Environmental

Temperature: -55~+125°C

### Attenuation Accuracy and VSWR

Frequency (GHz)	Attenuation Accuracy (±dB) vs. Attenuation (dB)				VSWR (max.)
	10~20	21~30	31~40	41~60	
DC~4	0.7	0.8	0.9	0.9	1.2
4~8	0.8	0.9	0.9	0.9	1.25
8~12.4	0.9	1.0	1.1	1.1	1.35
12.4~18	2.0	1.5	1.3	1.4	1.45

### How To Order

#### QFA18K25-X-Y-Z

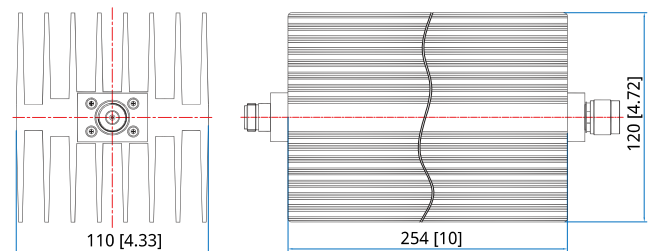
X: Frequency in GHz  
 Y: Attenuation in dB  
 Z: Connector type

Connector naming rules:  
 N - N

#### Examples:

To order an attenuator, DC-18GHz, N male to N female, 20dB attenuation, specify QFA18K25-18-20-N.

### Outline Drawings



Unit: mm [in]  
 Tolerance: ±2mm [±0.08in]