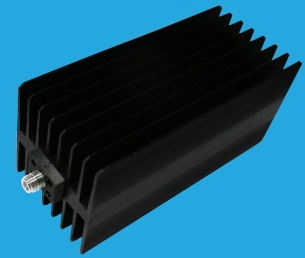


QFA18K5

DC~18GHz, 500W

Features:
 * Low VSWR
 * High Attenuation Flatness

Applications:
 * Wireless
 * Transmitter
 * Laboratory Test
 * Radar



Electrical

Frequency: DC~18GHz
 Attenuation: 10~60dB
 Impedance: 50Ω
 Average Power*1: 500W@25°C max.

[1] Derated linearly to 25W@120°C.

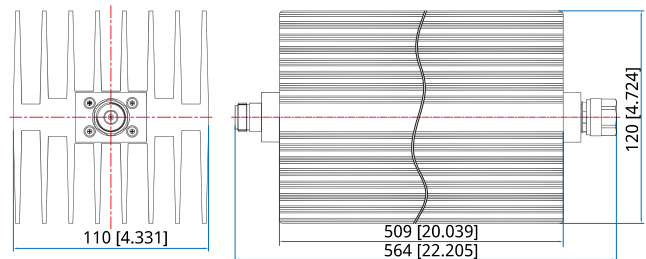
Mechanical

Size: 564*120*110mm
 22.205*4.724*4.331in
 RF Connectors: N Male, N Female

Environmental

Temperature: -55~+125°C

Outline Drawings



Unit: mm [in]
 Tolerance: ±2mm [±0.08in]

Attenuation Accuracy and VSWR

Frequency (GHz)	Attenuation Accuracy (±dB) vs. Attenuation (dB)						VSWR (max.)
	10	20	30	40	50	60	
DC~4	-0.6/+1.5	1.2	1.0	1.0	1.0	1.0	1.25
4~8	-0.5/+2.0	2.0	1.5	1.1	1.1	1.1	1.30
8~12.4	3.0	2.0	-1.5/+2.0	1.2	1.2	1.2	1.35
12.4~18	6.0	5.0	0/+6.0	1.5	1.5	1.5	1.5

How To Order

QFA18K5-X-Y-Z

X: Frequency in GHz
 Y: Attenuation in dB
 Z: Connector type

Connector naming rules:
 N - N

Examples:

To order an attenuator, DC-18GHz, N male to N female, 30dB attenuation, specify QFA18K5-18-30-N.