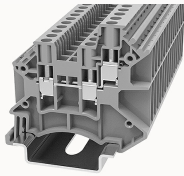


Обзор

информацию продукте

**DC2.5-TW-11020000067**

Screw type Din-Rail TB, Rated voltage : 1000 V, Rated current: 24 A, connector method: Screw/plug-in connector, Number of connectors: 3, Number of potentials: 1, Cross section: 0.2 mm² - 4 mm², AWG: 26 - 12, Width: 5.1 mm, Height: 47.7mm, Color: gray, Mounting type: NS 35/7,5, NS 35/15

Преимущества продукта

- Steel screw connection technology, reliable connection;
- Equipped with dual-channel bridge wells, circuit connection testing is more flexible;
- Unique plug-in bridge, high circuit connection efficiency;
- The box has a baffle to prevent mis-insertion;
- Can be matched with marker strips to avoid incorrect insertion of wires.

Сертификация продукции



Технические данные

Чертеж изделия

3D модель

□

Overview

| | |
|-----------------------|------------------|
| Connection method | screw connection |
| Number of potentials | 1 |
| Number of rows | 1 |
| number of connections | 3 |
| electric potentials | 1 |
| Open-end side panels | Yes |
| Insulation Materials | PA |

| | |
|---|---|
| Flame retardant grade, in line with UL 94 | V0 |
| Application field | Railway industry, mechanical engineering, factory engineering, process industry, etc. |
| color | Gray |

Dimension

| | |
|------------------|--------|
| NS 35/7,5 Height | 49.2mm |
| End plate width | 1.5mm |
| NS 35/15 Height | 56.7mm |
| length | 50.9mm |
| width | 5.1mm |
| Height | 47.7mm |

Wiring data

| | |
|--------------------------------------|------------------------|
| Strip length | 10mm |
| Conductor cross section solid | 0.2~4mm ² |
| Conductor cross section flexible | 0.2~2.5mm ² |
| Conductor cross section flexible AWG | 22~12 |
| Conductor cross section solid AWG | 22~12 |
| screw thread | M2.5 |
| Tightening torque | 0.4N.m |

Environmental conditions

| | |
|---|---|
| Ambient temperature (operation) | -40 °C ~ 105 °C (depending on derating curve) |
| Ambient temperature (storage / transport) | -5 °C ~ 70 °C |
| Ambient temperature (assembly) | -5 °C ~ 70 °C |
| Ambient temperature (execution) | -5 °C ~ 70 °C |
| Relative humidity (storage/transport) | 25%~75% |

UL Electrical parameters

| | |
|-----------------------------|--------|
| standard test | UL1059 |
| Rated voltage (Use Group B) | 600V |
| Rated current (Use Group B) | 20A |

IEC Electrical parameters

| | |
|---------------------------|--------------|
| standard test | IEC60947-7-1 |
| Pollution level | 3 |
| Overvoltage level | III |
| Insulating material group | I |
| Rated voltage (III / 3) | 1000V |
| Rated current (III / 3) | 24A |
| Rated surge voltage | 8KV |

Safety test

| | |
|-------------------|------|
| Anti-finger touch | IP20 |
|-------------------|------|

Mechanical performance test

| | |
|---|---------------------------|
| Mechanical performance test | Passed the test |
| Bending test rotation speed | 10rpm |
| Bending test | 135 |
| Bend test lead cross section/weight | 0.2mm ² /0.2kg |
| | 2.5mm ² /0.7kg |
| Tensile test results | Passed the test |
| Conductor cross-section tensile test/set point traction | 0.2mm ² /10N |
| | 2.5mm ² /50N |

Environmental protection

| | |
|------------|---------------------------------|
| REACH SVHC | Lead 7439-92-1 |
| RoHS | No excessive harmful substances |

Electrical performance test

| | |
|------------------------------|-----------------|
| Requirement, voltage drop | ≤3.2mV |
| Voltage drop test results | Passed the test |
| Temperature rise test result | Passed the test |

Аксессуары**Marking & Installation**

| | |
|---------------|-------|
| Marking strip | ZB5 |
| Marker cards | DBE-1 |

Accessories

| | |
|-----------|----------------------|
| End cover | D-DC2.5-TW |
| Bridge | DFA2.5 |
| End clamp | E-WS |
| DIN rail | NS35/7.5-1000-00A(H) |

Бизнес-данные

| | |
|------------------------------|-------------|
| Номер заказа | 11020000067 |
| Единица упаковки | 50 |
| Минимум для заказа | 50 |
| Вес продукции (без упаковки) | 6.75 |