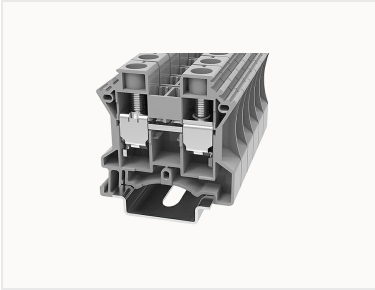


Обзор

информацию продукте



DC16-11020000012



Screw type Din-Rail TB, Rated voltage : 1000 V, Rated current: 76 A, connector method: Screw/plug-in connector, Number of connectors: 2, Number of potentials: 1, Cross section: 1.5 mm² - 25 mm², AWG: 14 - 10, Width: 12 mm, Height: 49.4mm, Color: gray, Mounting type: NS 35/7,5, NS 35/15

Преимущества продукта

- Steel screw connection technology, reliable connection;
- Equipped with dual-channel bridge wells, circuit connection testing is more flexible;
- Unique plug-in bridge, high circuit connection efficiency;
- The box has a baffle to prevent mis-insertion;
- Can be matched with marker strips to avoid incorrect insertion of wires.

Сертификация продукции



Технические данные

Чертеж изделия

3D модель

□

Overview

Connection method	screw connection
Number of potentials	1
Number of rows	1
number of connections	2
electric potentials	1
Open-end side panels	Yes
Insulation Materials	PA

Flame retardant grade, in line with UL 94	V0
Application field	Railway industry, mechanical engineering, factory engineering, process industry, etc.
color	Gray

Dimension

NS 35/7,5 Height	50.9mm
End plate width	1.5mm
NS 35/15 Height	58.4mm
length	50.25mm
width	12mm
Height	49.4mm

Wiring data

Strip length	12~13mm
Conductor cross section solid	1.5~25mm ²
Conductor cross section flexible	1.5~25mm ²
Conductor cross section flexible AWG	14~3
Conductor cross section solid AWG	14~10
screw thread	M5
Tightening torque	2.5N.m

Environmental conditions

Ambient temperature (operation)	-40 °C ~ 105 °C (depending on derating curve)
Ambient temperature (storage / transport)	-5 °C ~ 70 °C
Ambient temperature (assembly)	-5 °C ~ 70 °C
Ambient temperature (execution)	-5 °C ~ 70 °C
Relative humidity (storage/transport)	25%~75%

UL Electrical parameters

standard test	UL1059
Rated voltage (Use Group B)	600V
Rated current (Use Group B)	100A
Rated voltage (Use Group C)	600V
Rated current (Use Group C)	100A
Rated voltage (Use Group D)	600V
Rated current (Use Group D)	5A

IEC Electrical parameters

standard test	IEC60947-7-1
Pollution level	3
Overtoltage level	III
Insulating material group	I
Rated voltage (III / 3)	1000V
Rated current (III / 3)	76A
Rated surge voltage	8KV

Safety test

Anti-finger touch	IP20
-------------------	------

Mechanical performance test

Mechanical performance test	Passed the test
Bending test rotation speed	10rpm
Bending test	135
Bend test lead cross section/weight	1.5mm ² /0.4kg
	25mm ² /4.5kg
Tensile test results	Passed the test
	1.5mm ² /40N

Conductor cross-section tensile test/set point traction	25mm ² /135N
---	-------------------------

Environmental protection

REACH SVHC	Lead 7439-92-1
RoHS	No excessive harmful substances

Electrical performance test

Requirement, voltage drop	≤3.2mV
Voltage drop test results	Passed the test
Temperature rise test result	Passed the test

Аксессуары

Marking & Installation

Marking strip	ZB10
Marker cards	DBE-1

Accessories

End cover	D-DC16
Bridge	DFA16
End clamp	E-WS
DIN rail	NS35/7.5-1000-00A(H)

Бизнес-данные

Номер заказа	1102000012
Единица упаковки	20
Минимум для заказа	20
Вес продукции (без упаковки)	24.7

