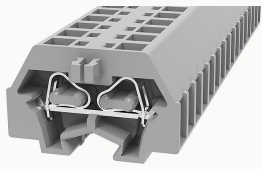


Overview

Product information



WS1.5-DB-11030000035

Spring-cage type Din-Rail TB, Rated voltage : 800 V, Rated current: 17.5 A, connector method: Spring-cage/plug-in connector, Number of connectors: 2, Number of potentials: 1, Cross section: 0.2 mm² - 1.5 mm², AWG: 28 - 16, Width: 5 mm, Height: 17mm, Color: gray, Mounting type: NS 35/7,5, NS 35/15

Product advantages

- Spring-cage connection technology, good anti-vibration performance;
- Use an ordinary flat-blade screwdriver, you can easily wire and take the wire;
- Panel installation, no need to install on the guide rail;
- Can be matched with marker strips to avoid incorrect insertion of wires.

Product certification



Technical data

Product drawing

3D model

□

Wiring data

Strip length	8~9mm
Conductor cross section solid	0.2~1.5mm ²
Conductor cross section flexible	0.2~1.5mm ²
Conductor cross section flexible AWG	28~16
Conductor cross section solid AWG	28~16

Environmental conditions

Ambient temperature (operation)	-40 °C ~ 105 °C (depending on derating curve)
---------------------------------	---

Ambient temperature (storage / transport)	-5 °C ~ 70 °C
Ambient temperature (assembly)	-5 °C ~ 70 °C
Ambient temperature (execution)	-5 °C ~ 70 °C
Relative humidity (storage/transport)	25%~75%

UL Electrical parameters

standard test	UL1059
Rated voltage (Use Group B)	300V
Rated current (Use Group B)	10A
Rated voltage (Use Group C)	300V
Rated current (Use Group C)	10A
Rated voltage (Use Group D)	300V
Rated current (Use Group D)	10A

IEC Electrical parameters

standard test	IEC60947-7-1
Pollution level	3
Overvoltage level	III
Insulating material group	I
Rated voltage (III / 3)	800V
Rated current (III / 3)	17.5A
Rated surge voltage	8KV

Safety test

Anti-finger touch	IP20
-------------------	------

Mechanical performance test

Mechanical performance test	Passed the test
Bending test rotation speed	10rpm

Bending test	135
Bend test lead cross section/weight	0.2mm ² /0.2kg
	1.5mm ² /0.4kg
Tensile test results	Passed the test
Conductor cross-section tensile test/set point traction	0.2mm ² /10N
	1.5mm ² /40N

Environmental protection

REACH SVHC	Lead 7439-92-1
RoHS	No excessive harmful substances

Electrical performance test

Requirement, voltage drop	≤3.2mV
Voltage drop test results	Passed the test
Temperature rise test result	Passed the test

Dimension

End plate width	2.5mm
length	25mm
width	5mm
Height	17mm

Overview

Connection type	Pull back spring connection
Number of positions	1
Number of rows	1
number of connections	2
electric potentials	1
Open-end side panels	Yes

Insulation Materials	PA
Flame retardant grade, in line with UL 94	V0
Application field	Railway industry, mechanical engineering, factory engineering, process industry, etc.
color	Gray

Accessories

Marking & Installation

Marking strip	DEK5
---------------	------

Accessories

End cover	D-WS1.5-DB
Rail adapter	WHH-WS1.5-DB

Business data

Order number	11030000035
Packing unit	100
Minimum order quantity	100
Products weight (without packaging)	1.61