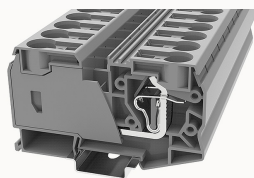


Overview

Product information


WS35-11030000266

Spring-cage type Din-Rail TB, Rated voltage : 1000 V, Rated current: 125 A, connector method: Spring-cage/plug-in connector, Number of connectors: 2, Number of potentials: 1, Cross section: 2.5 mm² - 35 mm², AWG: 14 - 2, Width: 16 mm, Height: 58.4mm, Color: gray, Mounting type: NS 35/7,5, NS 35/15

Product advantages

- spring-cage connection technology, good anti-vibration performance;
- Use an ordinary flat-blade screwdriver, you can easily wire and take the wire;
- Unique plug-in bridge, high circuit connection efficiency;
- Can be matched with marker strips to avoid incorrect insertion of wires.

Product certification



Technical data

Product drawing

3D model

Wiring data

Strip length	25mm
Conductor cross section solid	2.5~35mm ²
Conductor cross section flexible	2.5~35mm ²
Conductor cross section flexible AWG	14~2
Conductor cross section solid AWG	14~2

Environmental conditions

Ambient temperature (operation)	-40 °C ~ 105 °C (depending on derating curve)
---------------------------------	---

Ambient temperature (storage / transport)	-5 °C ~ 70 °C
Ambient temperature (assembly)	-5 °C ~ 70 °C
Ambient temperature (execution)	-5 °C ~ 70 °C
Relative humidity (storage/transport)	25%~75%

UL Electrical parameters

standard test	UL1059
Rated voltage (Use Group B)	1000V
Rated current (Use Group B)	125A

IEC Electrical parameters

standard test	IEC60947-7-1
Pollution level	3
Overvoltage level	III
Insulating material group	I
Rated voltage (III / 3)	1000V
Rated current (III / 3)	125A
Rated surge voltage	8KV

Safety test

Anti-finger touch	IP20
-------------------	------

Mechanical performance test

Mechanical performance test	Passed the test
Bending test rotation speed	10rpm
Bending test	135
Bend test lead cross section/weight	2.5mm ² /0.7kg
	35mm ² /6.8kg
Tensile test results	Passed the test

Conductor cross-section tensile test/set point traction	2.5mm ² /50N
	35mm ² /190N

Environmental protection

REACH SVHC	Lead 7439-92-1
RoHS	No excessive harmful substances

Electrical performance test

Requirement, voltage drop	≤3.2mV
Voltage drop test results	Passed the test
Temperature rise test result	Passed the test

Dimension

NS 35/7,5 Height	59.2mm
NS 35/15 Height	66.7mm
length	99.9mm
Height	58.4mm

Overview

Connection type	Pull back spring connection
Number of positions	1
Number of rows	1
number of connections	2
electric potentials	1
Open-end side panels	Yes
Insulation Materials	PA
Flame retardant grade, in line with UL 94	V0
Application field	Railway industry, mechanical engineering, factory engineering, process industry, etc.

color

Gray

Accessories

Marking & Installation

Marking strip

ZB10

Marker cards

DBE-1

Accessories

End clamp

E-WS

DIN rail

NS35/7.5-1000-00A(H)

Business data

Order number

11030000266

Packing unit

20

Minimum order quantity

20

Products weight (without packaging)

80.023