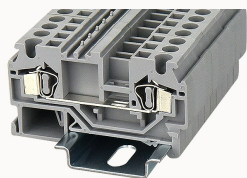


## Обзор

### информацию продукте



## WS4-11030000270



Spring-cage type Din-Rail TB, Rated voltage : 800 V, Rated current: 32 A, connector method: Spring-cage/plug-in connector, Number of connectors: 2, Number of potentials: 1, Cross section: 0.2 mm<sup>2</sup> - 4 mm<sup>2</sup>, AWG: 28 - 12, Width: 6 mm, Height: 33.45mm, Color: gray, Mounting type: NS 35/7,5, NS 35/15

### Преимущества продукта

- spring-cage connection technology, good anti-vibration performance;
- Use an ordinary flat-blade screwdriver, you can easily wire and take the wire;
- Unique plug-in bridge, high circuit connection efficiency;
- Can be matched with marker strips to avoid incorrect insertion of wires.

### Сертификация продукции



## Технические данные

### Чертеж изделия

### 3D модель

□

### Overview

Connection method	spring-cage connection
Number of potentials	1
Number of rows	1
number of connections	2
electric potentials	1
Open-end side panels	Yes
Insulation Materials	PA

Flame retardant grade, in line with UL 94	V0
Application field	Railway industry, mechanical engineering, factory engineering, process industry, etc.
color	Gray

#### Dimension

NS 35/7,5 Height	36.45mm
End plate width	2.5mm
NS 35/15 Height	43.95mm
length	60.4mm
width	6mm
Height	33.45mm

#### Wiring data

Strip length	13~14mm
Conductor cross section solid	0.2~4mm <sup>2</sup>
Conductor cross section flexible	0.2~4mm <sup>2</sup>
Conductor cross section flexible AWG	28~12
Conductor cross section solid AWG	28~12

#### Environmental conditions

Ambient temperature (operation)	-40 °C ~ 105 °C (depending on derating curve)
Ambient temperature (storage / transport)	-5 °C ~ 70 °C
Ambient temperature (assembly)	-5 °C ~ 70 °C
Ambient temperature (execution)	-5 °C ~ 70 °C
Relative humidity (storage/transport)	25%~75%

#### UL Electrical parameters

standard test	UL1059
---------------	--------

Rated voltage (Use Group B)	600V
Rated current (Use Group B)	20A
Rated voltage (Use Group C)	600V
Rated current (Use Group C)	20A
Rated voltage (Use Group D)	600V
Rated current (Use Group D)	5A

#### IEC Electrical parameters

standard test	IEC60947-7-1
Pollution level	3
Overtoltage level	III
Insulating material group	I
Rated voltage (III / 3)	800V
Rated current (III / 3)	32A
Rated surge voltage	8KV

#### Safety test

Anti-finger touch	IP20
-------------------	------

#### Mechanical performance test

Mechanical performance test	Passed the test
Bending test rotation speed	10rpm
Bending test	135
Bend test lead cross section/weight	0.2mm <sup>2</sup> /0.2kg
	4mm <sup>2</sup> /0.9kg
Tensile test results	Passed the test
Conductor cross-section tensile test/set point traction	0.2mm <sup>2</sup> /10N
	4mm <sup>2</sup> /60N

**Environmental protection**

REACH SVHC	Lead 7439-92-1
RoHS	No excessive harmful substances

**Electrical performance test**

Requirement, voltage drop	≤3.2mV
Voltage drop test results	Passed the test
Temperature rise test result	Passed the test

**Аксессуары****Marking & Installation**

Marking strip	ZB6
Marker cards	DBE-1

**Accessories**

End cover	D-WS4
Bridge	WFA4
End clamp	E-WS
DIN rail	NS35/7.5-1000-00A(H)

**Бизнес-данные**

Номер заказа	11030000270
Единица упаковки	50
Минимум для заказа	50
Вес продукции (без упаковки)	8.761